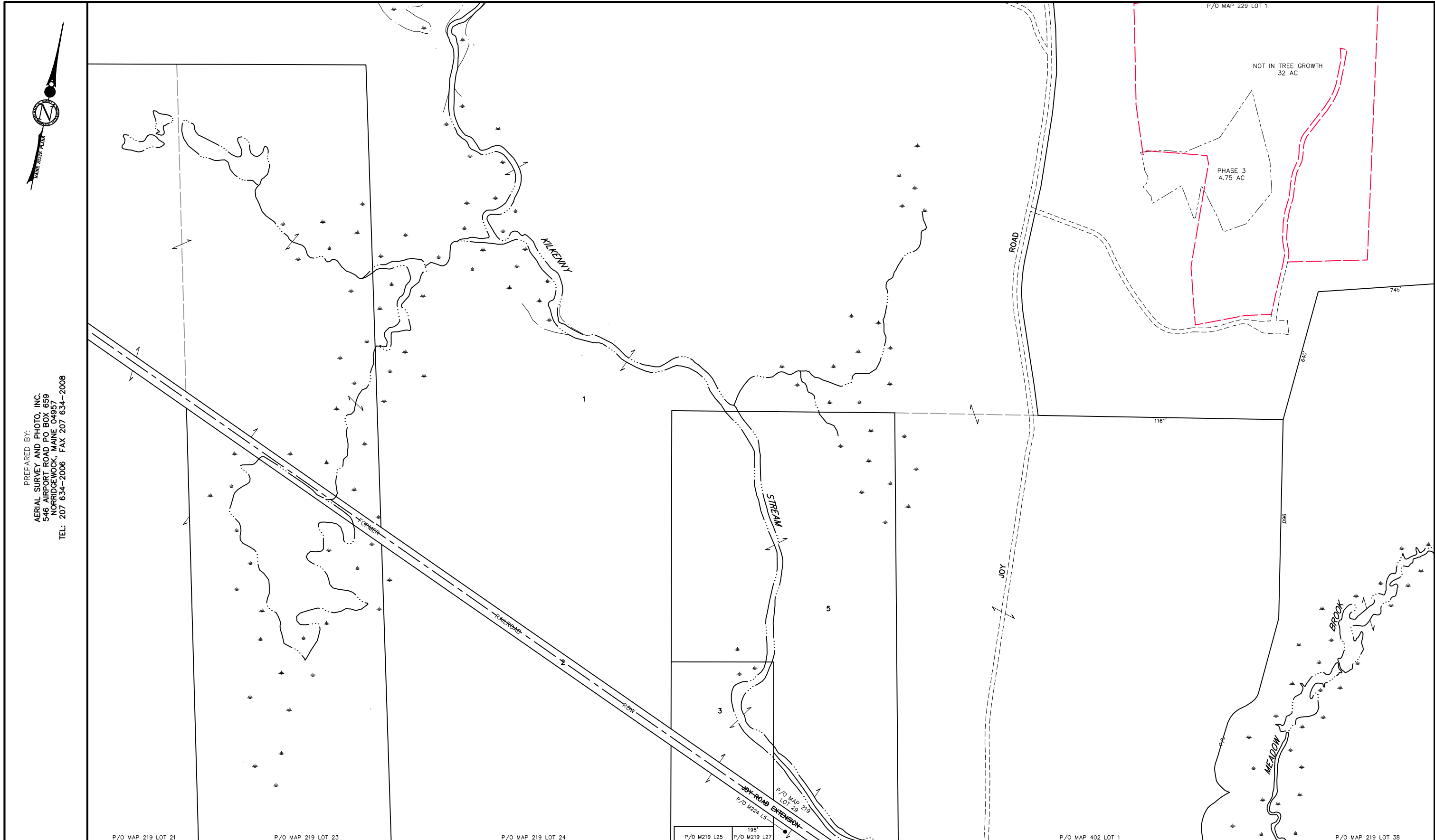




PREPARED BY:
 AERIAL SURVEY AND PHOTO, INC.
 546 AIRPORT ROAD PO BOX 659
 NORRIDGEWICK, MAINE 04957
 TEL: 207 634-2006 FAX 207 634-2008



P/O MAP 219 LOT 21 P/O MAP 219 LOT 23 P/O MAP 219 LOT 24 P/O M219 L25 P/O M219 L27 P/O MAP 219 LOT 29 P/O M224 L5 P/O MAP 402 LOT 1 P/O MAP 219 LOT 38

NOTES:

- 1) THIS MAP IS FOR ASSESSMENT PURPOSES ONLY AND IS NOT INTENDED FOR PROPERTY CONVEYANCE OR LEGAL DESCRIPTION.
- 2) REC = PARCEL ACREAGE FROM RECORDED PLAN OR DEED
 DIG = PARCEL ACREAGE CALCULATED DIGITALLY



TOWN OF HANCOCK
 18 POINT ROAD PO BOX 68
 HANCOCK, ME 04640

PARCEL NUMBER	74	MAP LEGEND
PARCEL DIMENSION	161.21'	PARCEL BOUNDARY
PARCEL AREA	2.456 AC	ROAD RIGHT OF WAY
MATCH LABEL	PO MAP 207 LOT 42	INTERNAL LOT LINE
SUBDIVISION LOT NUMBER	(74)	CONSERVATION EASEMENT
OLD MAP-LOT	22-13A	EASEMENT LINE
WATER LINE		PRIVATE RIGHT OF WAY
MAINE COAST HERITAGE TRUST		WETLAND EDGE
		SHORELAND ZONE /75' SETBACK
		CONSERVATION EASEMENT

APRIL 1, 2020

SCALE 1 INCH = 200 FEET

MAINE STATE PLANE COORDINATE GRID; EAST ZONE; NAD 1983; US FEET
 PARCEL MAP COMPILATION BY AERIAL SURVEY AND PHOTO, INC.

228	229	230
223	224	225
218	219	220

PROPERTY MAP
TOWN OF HANCOCK
 HANCOCK COUNTY, MAINE

224